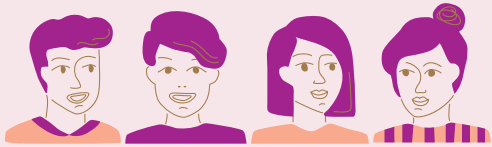


Stand in the church election

If you would like to stand in the church election, you can either join an existing nomination group or form a new group together with individuals who share your interests or values. The deadline for registering candidates is 15 April 2025.

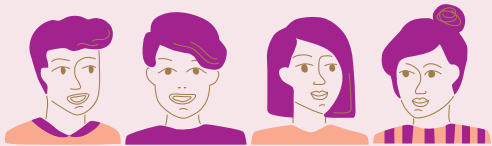
Find out more at svenskakyrkan.se/kyrkoval (in Swedish), or contact your diocesan office.



Stand in the church election

If you would like to stand in the church election, you can either join an existing nomination group or form a new group together with individuals who share your interests or values. The deadline for registering candidates is 15 April 2025.

Find out more at svenskakyrkan.se/kyrkoval (in Swedish), or contact your diocesan office.



With its 5.5 million members, the Church of Sweden is Sweden's largest faith community. The Christian faith is founded on caring for all of creation. This means that the Church of Sweden is committed to the value and dignity of all people, and to sustainable climate work.

As a member, you are part of a community that creates joy, understanding and context. For example through baptism, weddings or other church services, drop-in preschool, activities for children and young people, choirs and concerts.

You are involved in supporting the Church's social work for people who are vulnerable, alone and grieving. You are also helping to preserve a significant cultural heritage in the form of buildings, objects and traditions.

With its 5.5 million members, the Church of Sweden is Sweden's largest faith community. The Christian faith is founded on caring for all of creation. This means that the Church of Sweden is committed to the value and dignity of all people, and to sustainable climate work.

As a member, you are part of a community that creates joy, understanding and context. For example through baptism, weddings or other church services, drop-in preschool, activities for children and young people, choirs and concerts.

You are involved in supporting the Church's social work for people who are vulnerable, alone and grieving. You are also helping to preserve a significant cultural heritage in the form of buildings, objects and traditions.

Information in other languages

Lätt svenska	Español
	Deutsch
	Français
Suomi	العربية
English	فارسی
Davvisámegiella	ጥግርኛ
Åarjelsaemien	
Julevsámegiella	Romani chib
Meänkieli	Somali

Use your mobile to scan the code and find out more about the church election!



Information in other languages

Lätt svenska	Español
	Deutsch
	Français
Suomi	العربية
English	فارسی
Davvisámegiella	ጥግርኛ
Åarjelsaemien	
Julevsámegiella	Romani chib
Meänkieli	Somali

Use your mobile to scan the code and find out more about the church election!



Useful information about the church election

Church election

8–21 September 2025

Useful information about the church election

Church election

8–21 September 2025

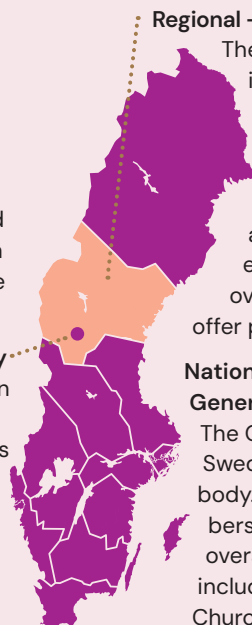
Vote in the church election

The Church of Sweden is a democratic organisation, and from 8–21 September 2025 we will be holding the church election. If you are over the age of 16 and a member, you can influence the Church and make your voice heard. You can vote at three levels in the church election:

Local – election to the Parish Assembly

You elect people to the Parish Assembly in the parish or group of parishes in which you live. The Parish Assembly determines the framework for the activities in your local area. For example, which activities the parish will have for children, young people and senior parishioners, or what music activities will be organised.

The Church of Sweden is made up of 1,288 parishes, 13 dioceses and roughly 5.5 million members.



Regional – election to the Diocesan Council

The Church of Sweden is divided into 13 dioceses. The Diocesan Council is the highest decision-making body in a diocese. The main task of the diocese is to support the parishes in their activities and management. For example, if a church is to be renovated, the diocese may be able to offer property-related expertise.

National – election to the General Synod

The General Synod is the Church of Sweden's highest decision-making body. The General Synod's 251 members make decisions on the joint and overarching matters of the church, including everything from how the Church should work on climate issues to which hymns to include in the hymnal.

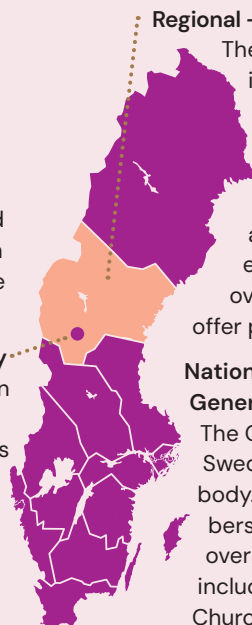
Vote in the church election

The Church of Sweden is a democratic organisation, and from 8–21 September 2025 we will be holding the church election. If you are over the age of 16 and a member, you can influence the Church and make your voice heard. You can vote at three levels in the church election:

Local – election to the Parish Assembly

You elect people to the Parish Assembly in the parish or group of parishes in which you live. The Parish Assembly determines the framework for the activities in your local area. For example, which activities the parish will have for children, young people and senior parishioners, or what music activities will be organised.

The Church of Sweden is made up of 1,288 parishes, 13 dioceses and roughly 5.5 million members.



Regional – election to the Diocesan Council

The Church of Sweden is divided into 13 dioceses. The Diocesan Council is the highest decision-making body in a diocese. The main task of the diocese is to support the parishes in their activities and management. For example, if a church is to be renovated, the diocese may be able to offer property-related expertise.

National – election to the General Synod

The General Synod is the Church of Sweden's highest decision-making body. The General Synod's 251 members make decisions on the joint and overarching matters of the church, including everything from how the Church should work on climate issues to which hymns to include in the hymnal.

How to vote

On election day, 21 September 2025, you cast your vote at the polling station stated on your voting card. You will receive your voting card a few weeks prior to the election. Important: Bring your ID card with you!

Early voting is possible throughout Sweden during the period 8–21 September 2025.

Postal voting or proxy voting enables you to vote if you are unable to get to the polling station.



How to vote

On election day, 21 September 2025, you cast your vote at the polling station stated on your voting card. You will receive your voting card a few weeks prior to the election. Important: Bring your ID card with you!

Early voting is possible throughout Sweden during the period 8–21 September 2025.

Postal voting or proxy voting enables you to vote if you are unable to get to the polling station.



What do I vote for?

The church election involves voting for nomination groups. You can view the groups and candidates that are standing at svenskakyrkan.se/kyrkoval (in Swedish).

You are allowed to put a cross against three names on the ballot paper.

The 2021 church election in figures:
4.9 million eligible voters
27,000 candidates
602 nomination groups
14,000 seats
96 million printed ballot papers
593 election committees

What do I vote for?

The church election involves voting for nomination groups. You can view the groups and candidates that are standing at svenskakyrkan.se/kyrkoval (in Swedish).

You are allowed to put a cross against three names on the ballot paper.

The 2021 church election in figures:
4.9 million eligible voters
27,000 candidates
602 nomination groups
14,000 seats
96 million printed ballot papers
593 election committees